

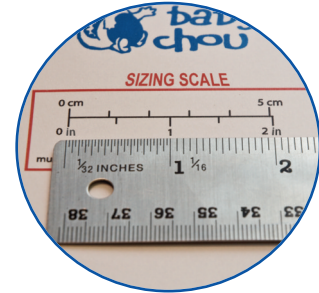


Measuring Chart

IMPORTANT : Please read contents carefully and follow the steps exactly.

Using the Baby Chou Measuring Chart

1 Print the chart at 100% normal size. Compare with a ruler, as illustrated, to make sure the measurements correspond. If they do, you can go to the next step, otherwise, correct your printer parameters and reprint this document.



2 Put your child's foot on the chart, aligning the rear of the foot with the start line.



3 Boots or Duckies
Circle the first full point size at or after the end of the big toe.



Crawlers' or Walking Boots

Circle the exact half-point or full point size

Redo Steps 2 and 3 with your child's other foot.

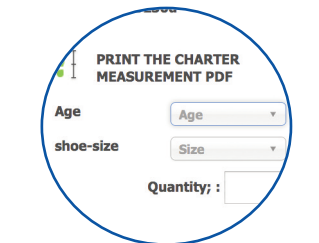
Enter child's age in the order form on our website

4 Boots
Enter the larger of the two measurements in the order form on our website.

For children 12 months to 31/2 years.

August - Sept. - October	
Foot	Boots
4,5	5
5	6

November - December	
Foot	Boots
4,5	5
5	5

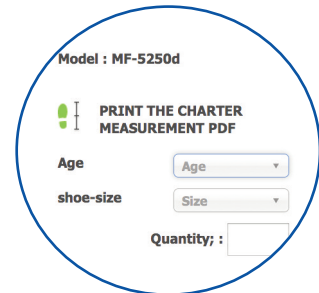


Duckies

Enter the larger of the two measurements in the order form on our website

No matter the age of the child.

Anytime	
Foot	Boots
4,5	5
5	5



Crawlers' or Walking Boots

Enter the foot size (full point or half point size)



SIZING SCALE



To see if the measuring chart was printed at 100% normal size, compare here with a ruler.

